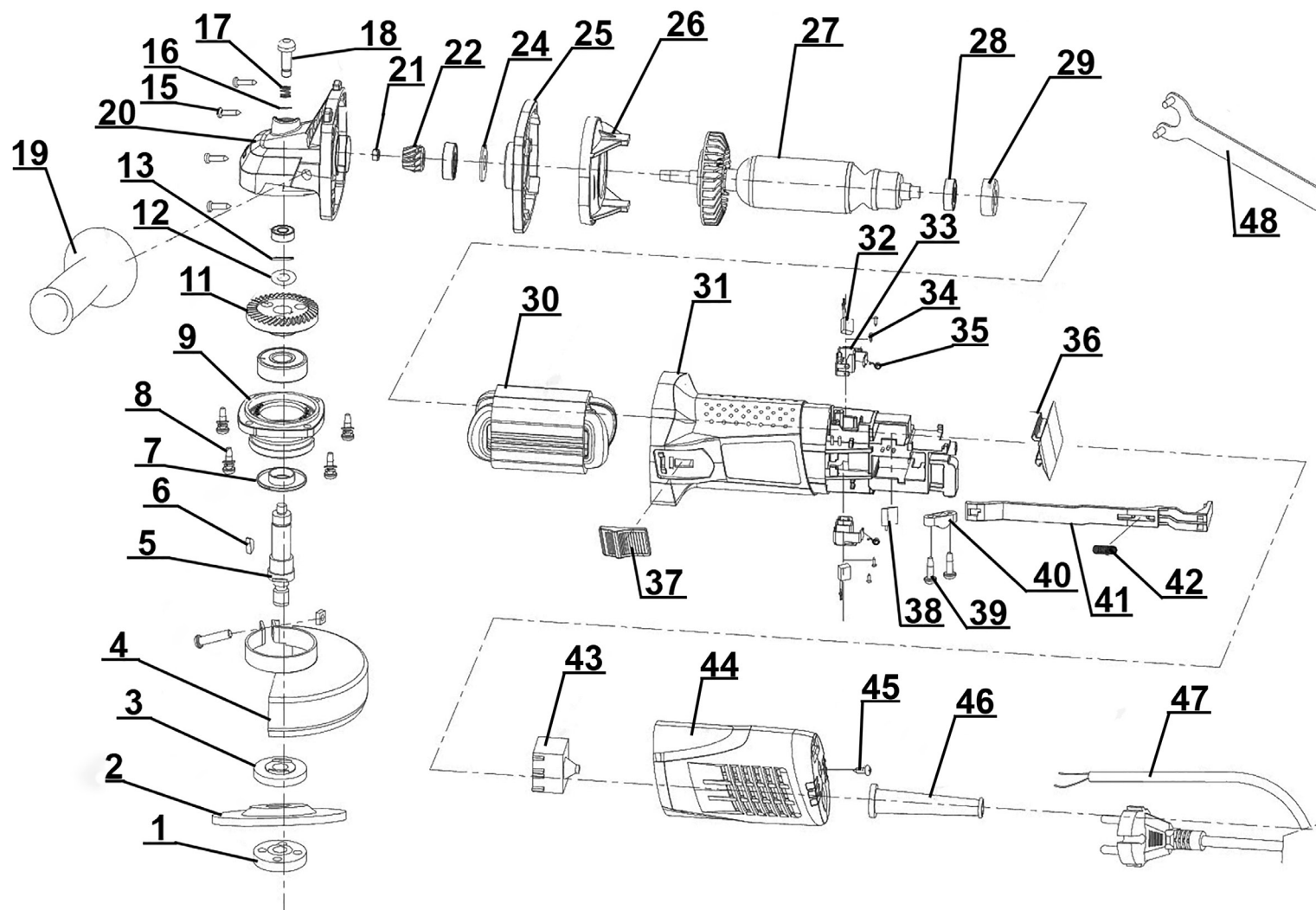


## Parts Information: 115mm Angle Grinder Slim Body 750W/230V Model No: SGS115



**NOTE:** It is our policy to continually improve products and as such we reserve the right to alter data, specifications and component parts without prior notice.

There may be alternative versions of this product, please contact us should you require this information.

**IMPORTANT:** No liability is accepted for incorrect use of product. Spare parts must be fitted by a competent person

**WARRANTY:** Guarantee is 12 months from purchase date, proof of which will be required for any claim.

Jack Sealey Ltd t/a Sealey Group, Kempson Way, Suffolk Business Park, Bury St Edmunds, Suffolk, IP32 7AR UK

Jack Sealey (EU) Ltd t/a Sealey Group, Farney Street, Carrickmacross, Co. Monaghan, A81 PK68 Ireland

Tel: 01284 757500 • Email: [sales@sealey.co.uk](mailto:sales@sealey.co.uk) • Web: [www.sealey.co.uk](http://www.sealey.co.uk)



Parts Information:  
**115mm Angle Grinder Slim Body**  
**750W/230V**  
**Model No: SGS115**

Item	Part No.	Description
1	SGS115.01	Flange Nut
2	PTC/115C	Cutting Disc (Ø115 x 3mm x Ø22mm Bore) - <b>Please see Catalogue</b>
3	SGS115.03	Flange
4	SGS115.04	Wheel Guard
5	SGS115.05	Spindle
6	SGS115.06	Woodruff Key
7	SGS115.07	Dust Cover
8	SGS115.08	Screw
9	SGS115.09	Front Cover
11	SGS115.11	Gear
12	SGS115.12	Wave Washer
13	SGS115.13	Spring Washer
15	SGS115.15	Screw
16	SGS115.16	E-Ring
17	SGS115.17	Spring Ø7.4mm
18	SGS115.18	Spindle Lock
19	SGS115.19	Side handle (Thread M8 x 1.25mm)
20	SGS115.20	Gear Case
21	SGS115.21	Screw
22	SGS115.22	Pinion
24	SGS115.24	Washer
25	SGS115.25	Middle Cover
26	SGS115.26	Baffle

Item	Part No.	Description
27	SGS115.27	Rotor / Rotor
28	B/607ZZ	Bearing 607ZZ
29	SGS115.29	Bearing Cover
30	SGS115.30	Stator
31	SGS115.31	Housing
32	SGS115.32	Carbon Brush (Pair)
33	SGS115.33	Brush Holder
34	SGS115.34	Rd Head S/T Screw M3 x 7mm
35	SGS115.35	Spring
36	SGS115.36	Speed Control Cover
37	SGS115.37	Red Button for Press Switch
38	SGS115.38	Capacitance 0.22µF 300V AC
39	SGS115.39	Screw
40	SGS115.40	Cord Clamp
41	SGS115.41	Push Bar
42	SGS115.42	Spring Ø5.4mm
43	SGS115.43	On/Off Switch Press Button (c/w Wires) 6A 250V
44	SGS115.44	Rear Handle
45	SGS115.45	Screw
46	SGS115.46	Cord Sleeve
47	SGS115.47	Cable
48	SGS115.48	Wrench

**NOTE:** It is our policy to continually improve products and as such we reserve the right to alter data, specifications and component parts without prior notice. There may be alternative versions of this product, please contact us should you require this information.

**IMPORTANT:** No liability is accepted for incorrect use of product. Spare parts must be fitted by a competent person

**WARRANTY:** Guarantee is 12 months from purchase date, proof of which will be required for any claim.