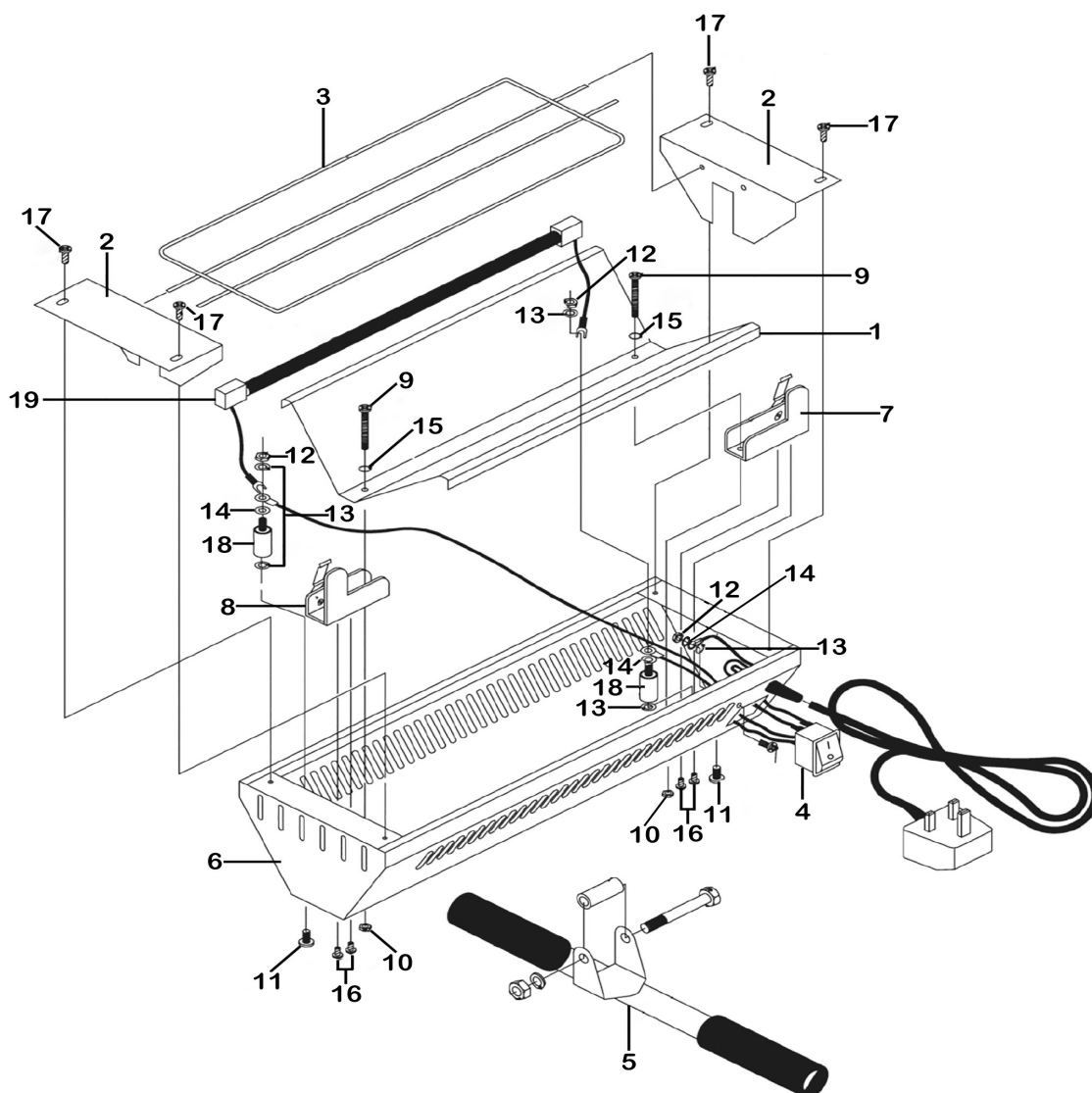


Parts Information:
**Infrared Panel Dryer Handheld - Short
 Wave 1000W/230V
 Model No: IR1000**



Item	Part No.	Description
1	IWMH1500.MR	Main Reflector
2	IR1000.02	End Reflector
3	IR1000.03	Guard
4	LP1500.V2-SW	Switch, On/Off Rocker Illuminated (16a/250v)
5	IR1000.05	Complete Handle ass'y
6	IR1000.06	Main Frame
7	IR1000.07	Lamp Holder (Long)
8	IR1000.08	Lamp Holder (Short)
9	LP1500.V2-410	Long Bolts (Pack of 10)
10	SN4.S	Steel Nut M4 Zinc

Item	Part No.	Description
11	IWMH1500.511	Screw (Pack of 10)
12	SN5.S	Steel Nut M5 Zinc
13	IWMH1500.503	Star Washer
14	IWMH4500.502	Washers (Pack of 10)
15	IWMH1500.403	M4 Int Tooth Washer Zinc
16	LP1500.V2-280	Screws (Pack of 10)
17	LP1500.V2-260	Screws (Pack of 10)
18	LP1500.V2-P	Pillar
19	INF64241072	Lamp, Tube, Infra Red Quartz 1kw, 220/240v

NOTE: It is our policy to continually improve products and as such we reserve the right to alter data, specifications and component parts without prior notice. There may be alternative versions of this product, please contact us should you require this information.

IMPORTANT: No liability is accepted for incorrect use of product. Spare parts must be fitted by a competent person

WARRANTY: Guarantee is 12 months from purchase date, proof of which will be required for any claim.