

baridi

Corner Shower Entry Enclosure 800 x 800 x 1850, 6mm Tempered Glass - Chrome



Model No: DH298

Thank you for purchasing a Dellonda product. Manufactured to a high standard, this product will, if used according to these instructions, and properly maintained, give you years of trouble free performance.

Important Information

Please read these instructions carefully. Note the safe operational requirements, warnings & cautions. Use the product correctly and with care for the purpose for which it is intended. Failure to do so may cause damage and/or personal injury and will invalidate the warranty. Keep these instructions safe for future use.



Refer to
instruction
manual

SPECIFICATION

MODEL NO:	DH298
Colour of Product:	Silver
Colour:	Chrome
Glass Thickness:	6mm
Material:	Aluminium Profile with Chrome Finish
Nett Weight:	44kg
Product Dimensions (W x D x H):	800 x 800 x 1850mm

CONTENTS

(See first assembly)

SAFETY INSTRUCTIONS UPON OPENING THE BOX

- ✓ **Lift with care:** The side panel may be heavy or awkward to carry. Use two people and proper lifting technique to avoid strain or injury.
- ✗ **DO NOT** drag: Never slide or drag the side panel across rough or hard surfaces, it may damage the finish or distort the shape.
- ✓ **Protect surfaces:** Place the side panel on a flat, clean, padded surface (e.g. cardboard, towel, or foam sheet) during inspection and installation prep.




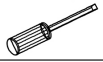


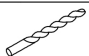
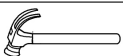
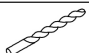

GENERAL HANDLING

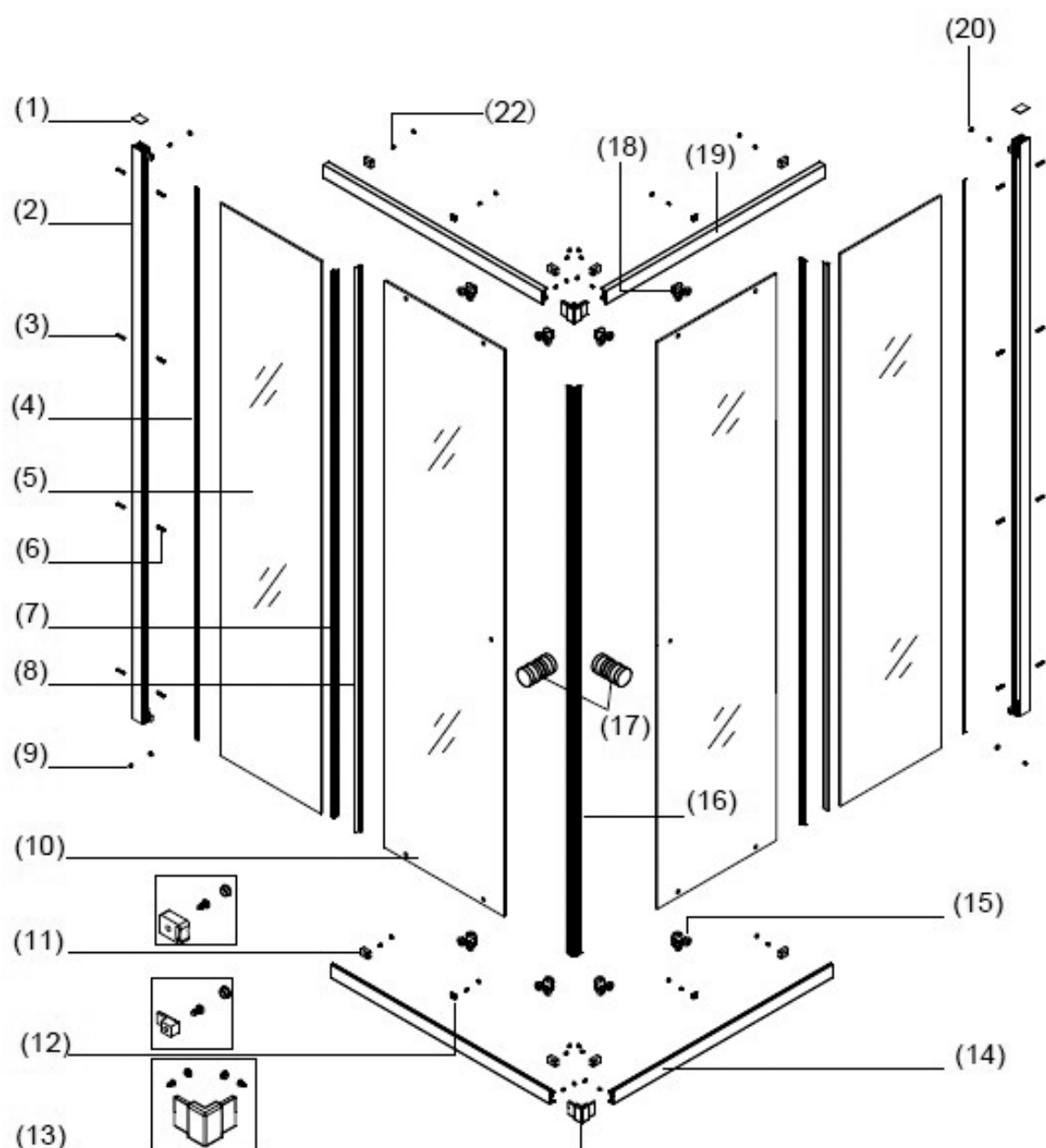
- ✓ **Wear PPE:** Use safety gloves and steel-toe footwear when handling the side panel or tools.
 - ✓ **Avoid impact:** This product can crack or shatter if dropped. Always handle with care.
 - ✓ **Keep packaging away from children:** Plastic bags and packaging materials are suffocation hazards.
- Store flat and indoors: Until installation, store the side panel on a level surface in a dry area to avoid warping or moisture absorption.
- NOTE:** Safety glass cannot be re-worked, so please read these instructions carefully before starting installation, and take special care when drilling walls to avoid hidden pipes or electrical cables.

INSTALLATION

Please read these installation procedures carefully and familiarise yourself with all components before beginning. Upon receipt of the side panel, inspect the product immediately and thoroughly for any signs of transit damage or manufacturing defects. Do not proceed with installation if any issues are found, contact your supplier for guidance.

TOOLS REQUIRED

DESCRIPTION	PART IMAGE	DESCRIPTION	PART IMAGE
Tape measure		Drill	
Spirit level		Flat-head Screwdriver	
Pencil		Cross head Screwdriver	 PZ1
Ø6mm Drill bit		Hammer	
Ø3mm Drill bit		Silicone Sealant	



NO.	Description	QTY	Diagram
1	Wall jamb cover cap	2	
2	Wall jamb	2	
3	Wall anchor	8	
4	Sealent strip	2	
5	Fixed panel	2	
6	Screw(3.9x40)	8	
7	Vertical gasket for fixed panel	2	
8	Vertical gasket for moving panel	2	
9	Screw(3.9x10)	20	
10	Moving panel	2	
11	Stopper	8	

NO.	Description	QTY	Diagram
12	Glass clip	4	
13	Corner bracket	2	
14	Bottom rail	2	
15	Bottom roller	4	
16	Magnet strip	2	
17	Handle	2	
18	Top roller	4	
19	Upper rail	2	
20	Screw cover cap	8	
21	Rubber sleeve	1	
22	Screw(3.9x8)	8	

fig.1

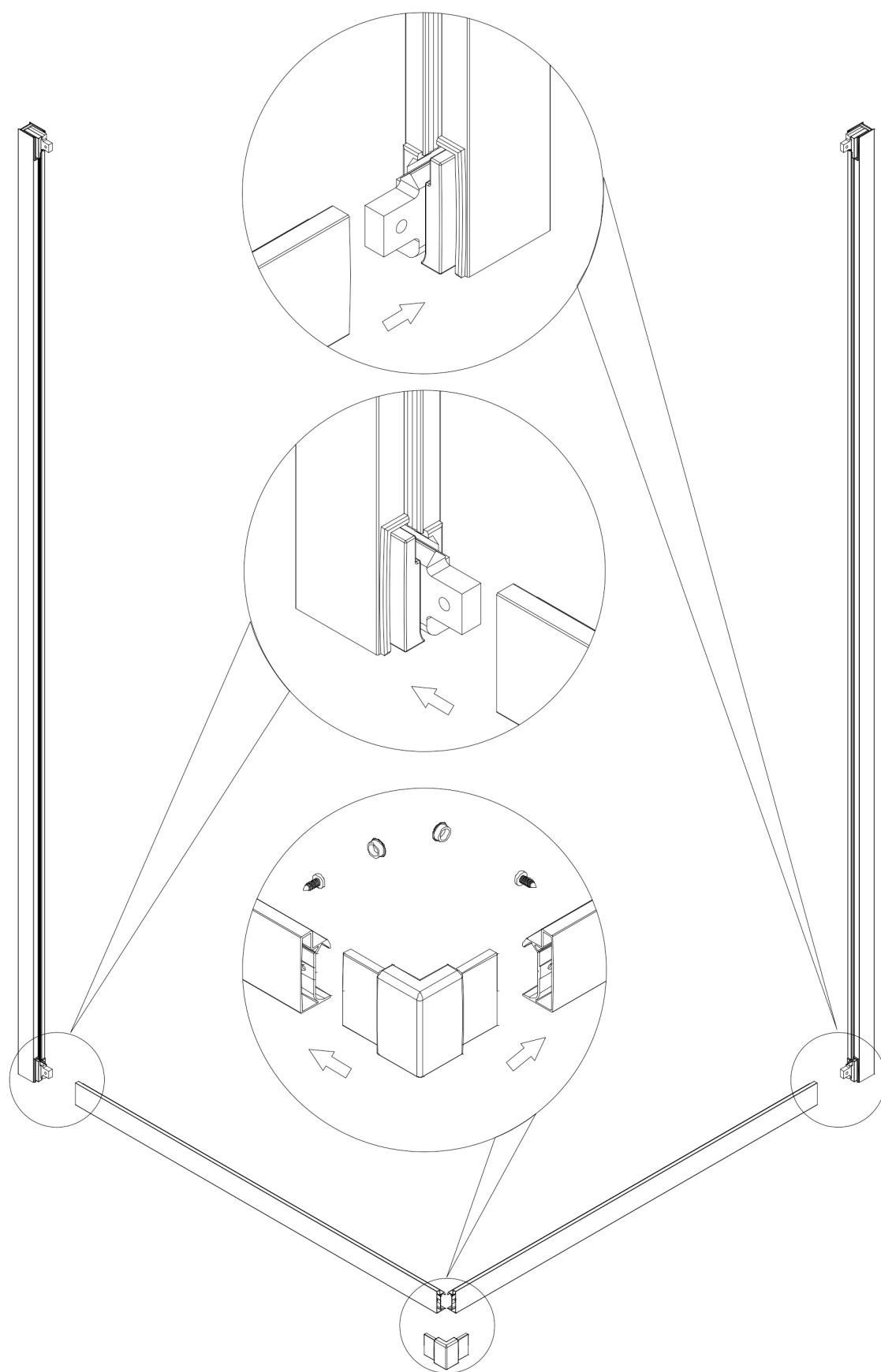


fig.2

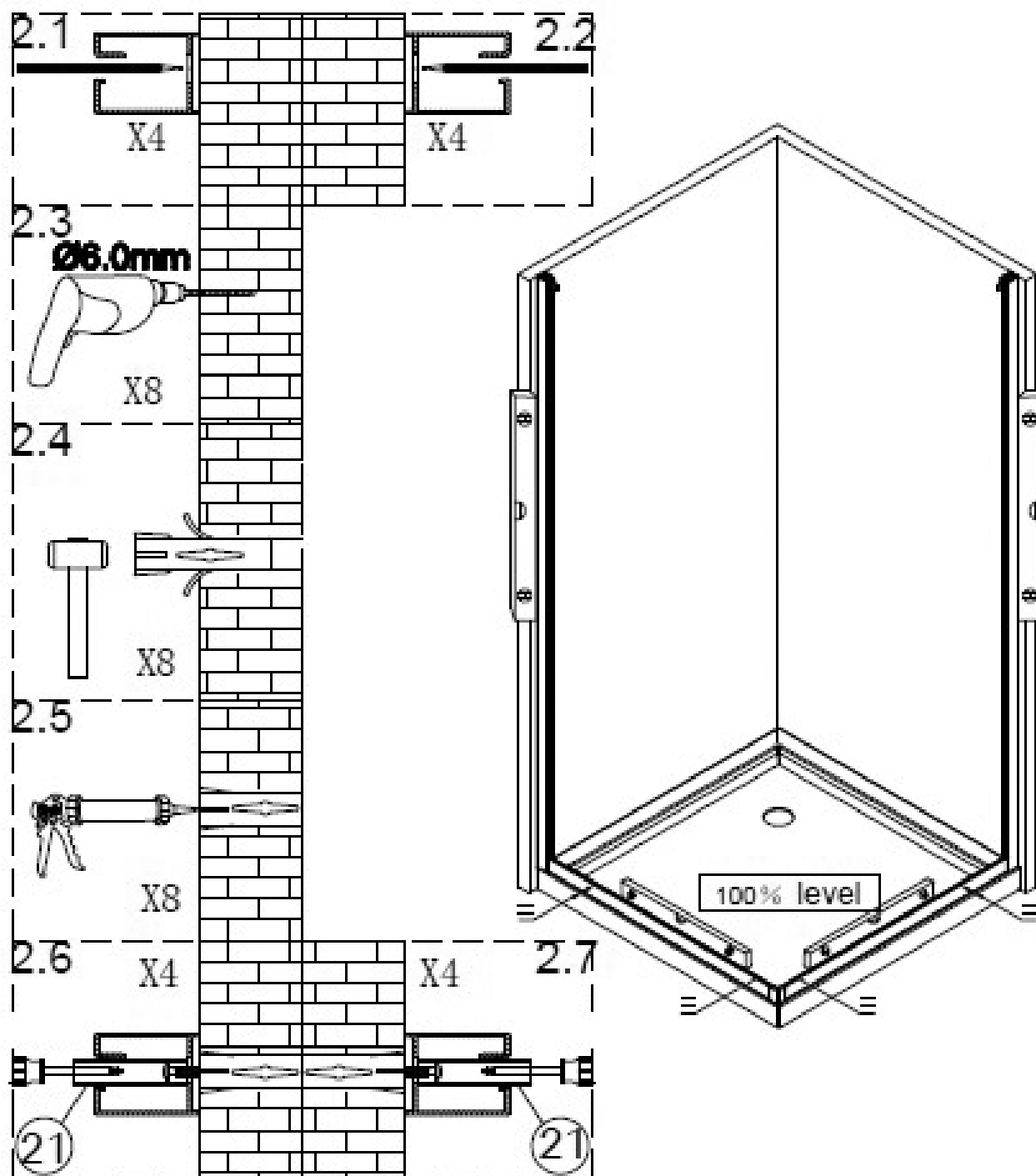


fig.3

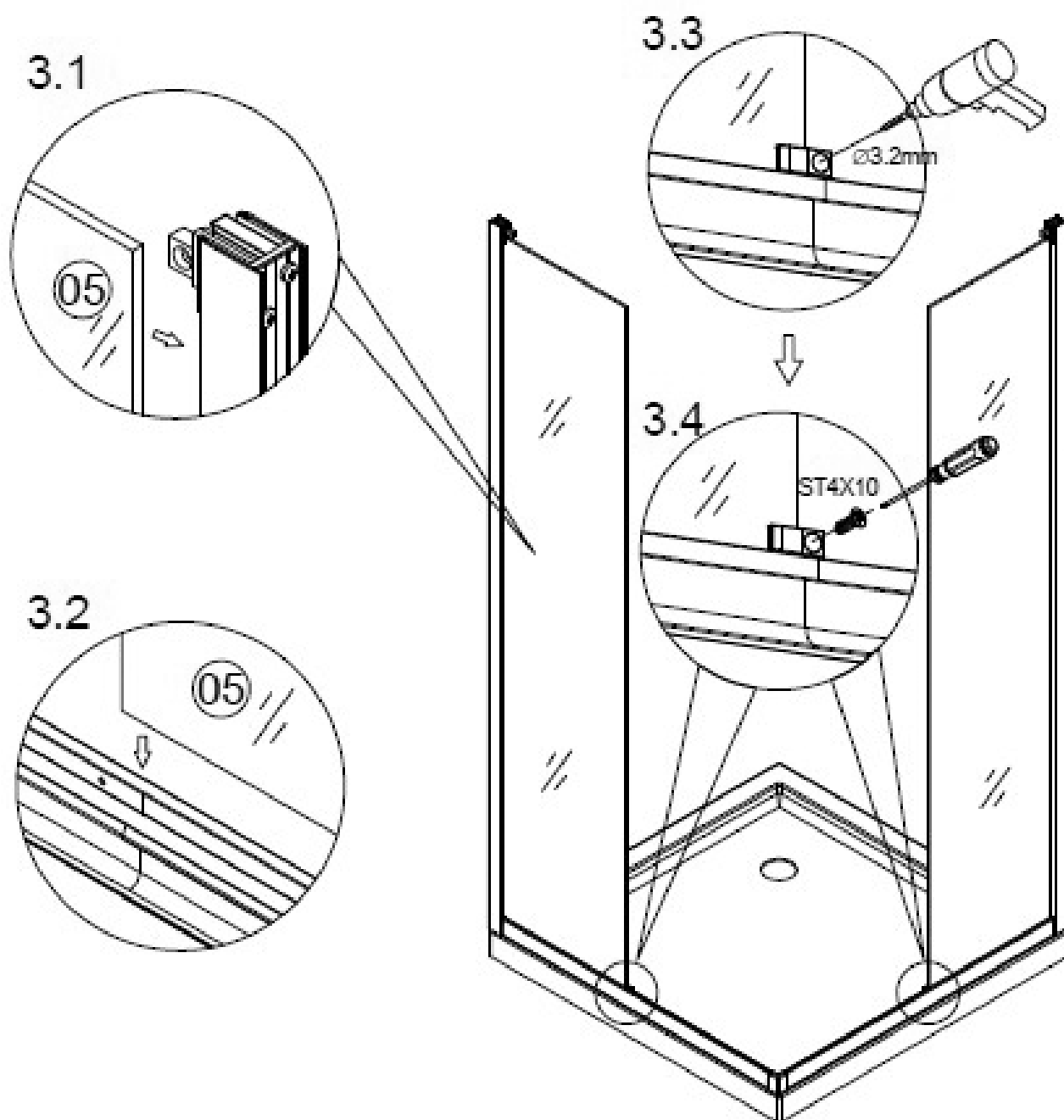


fig.4

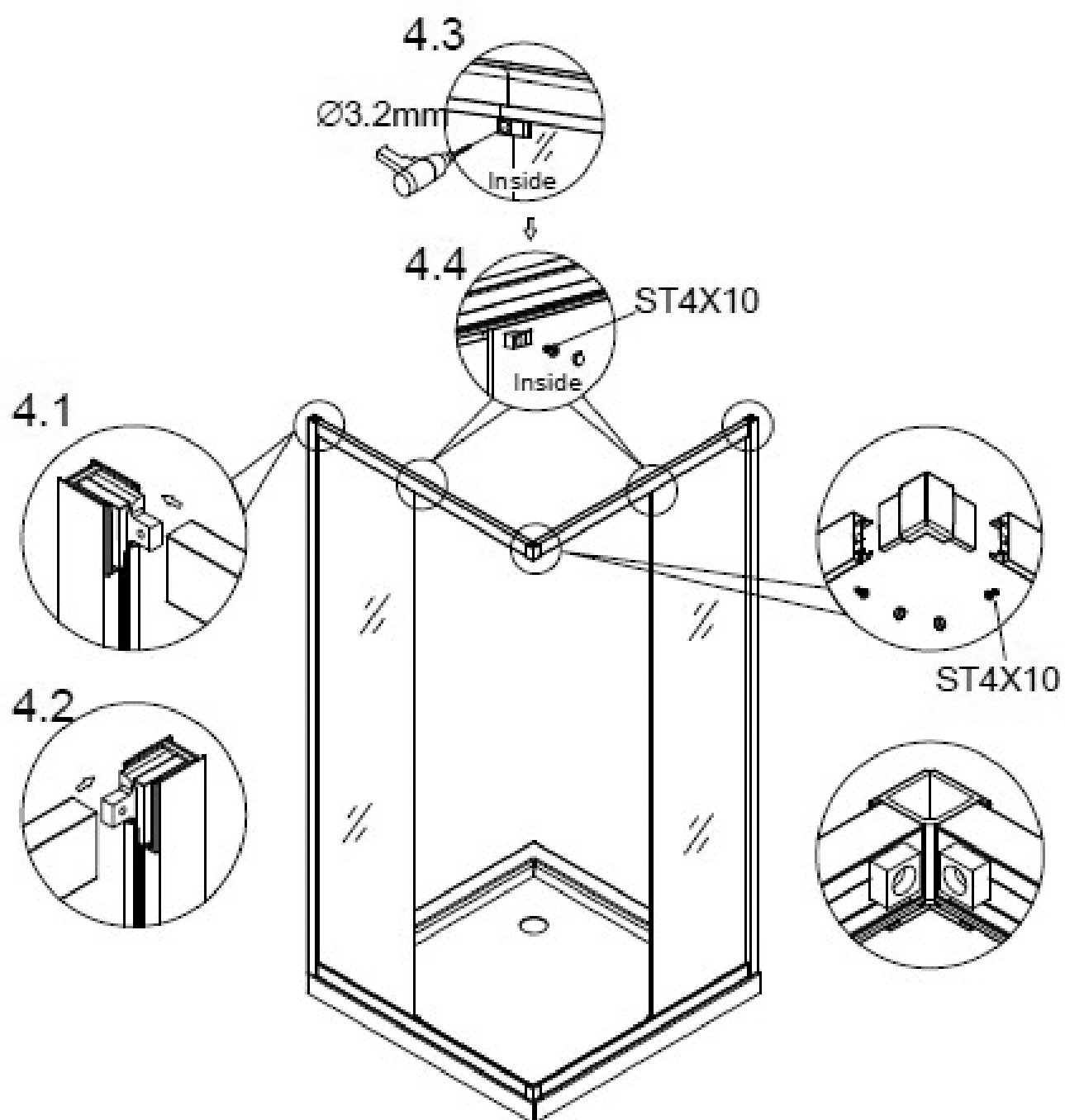


fig.5

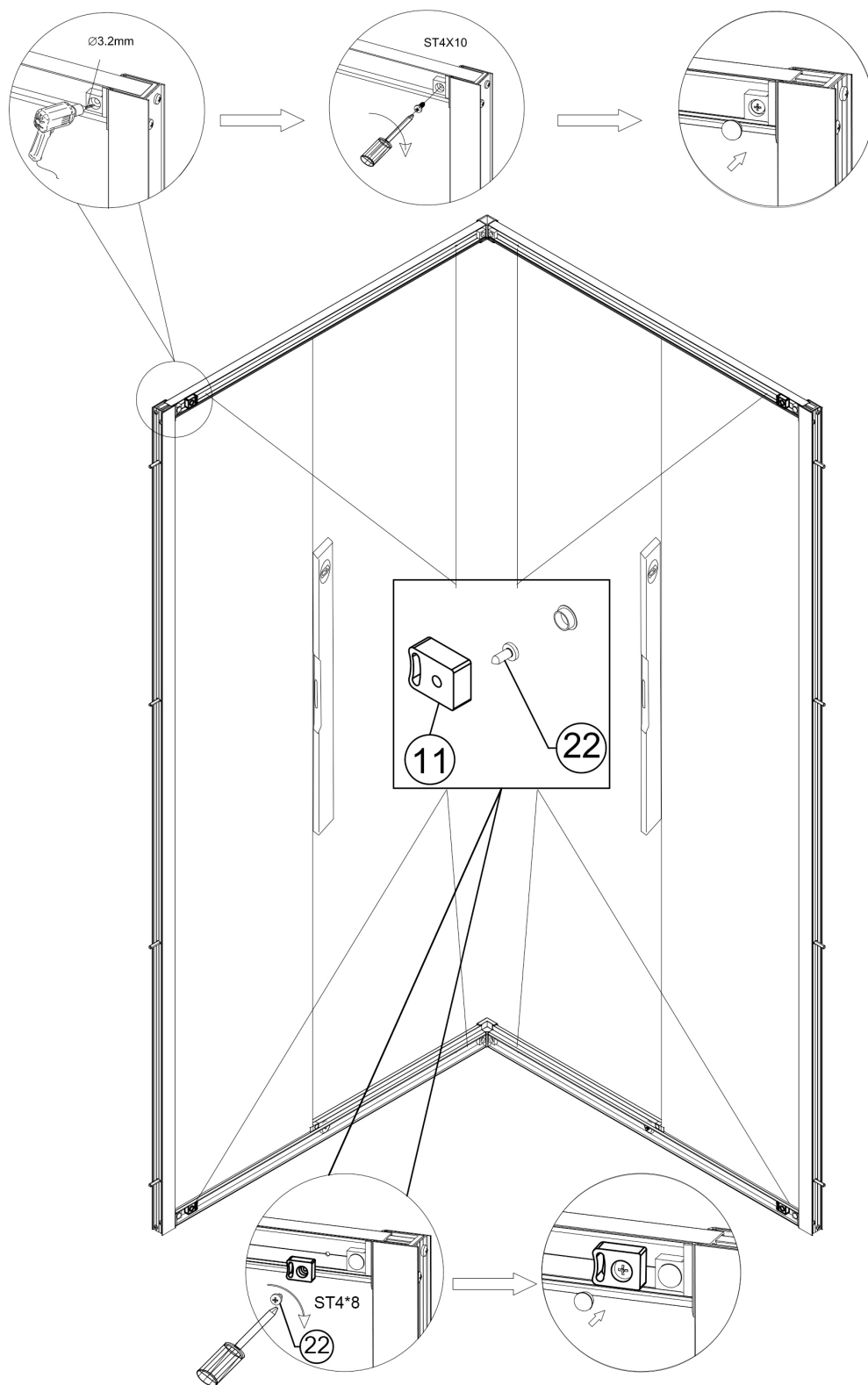


fig.6

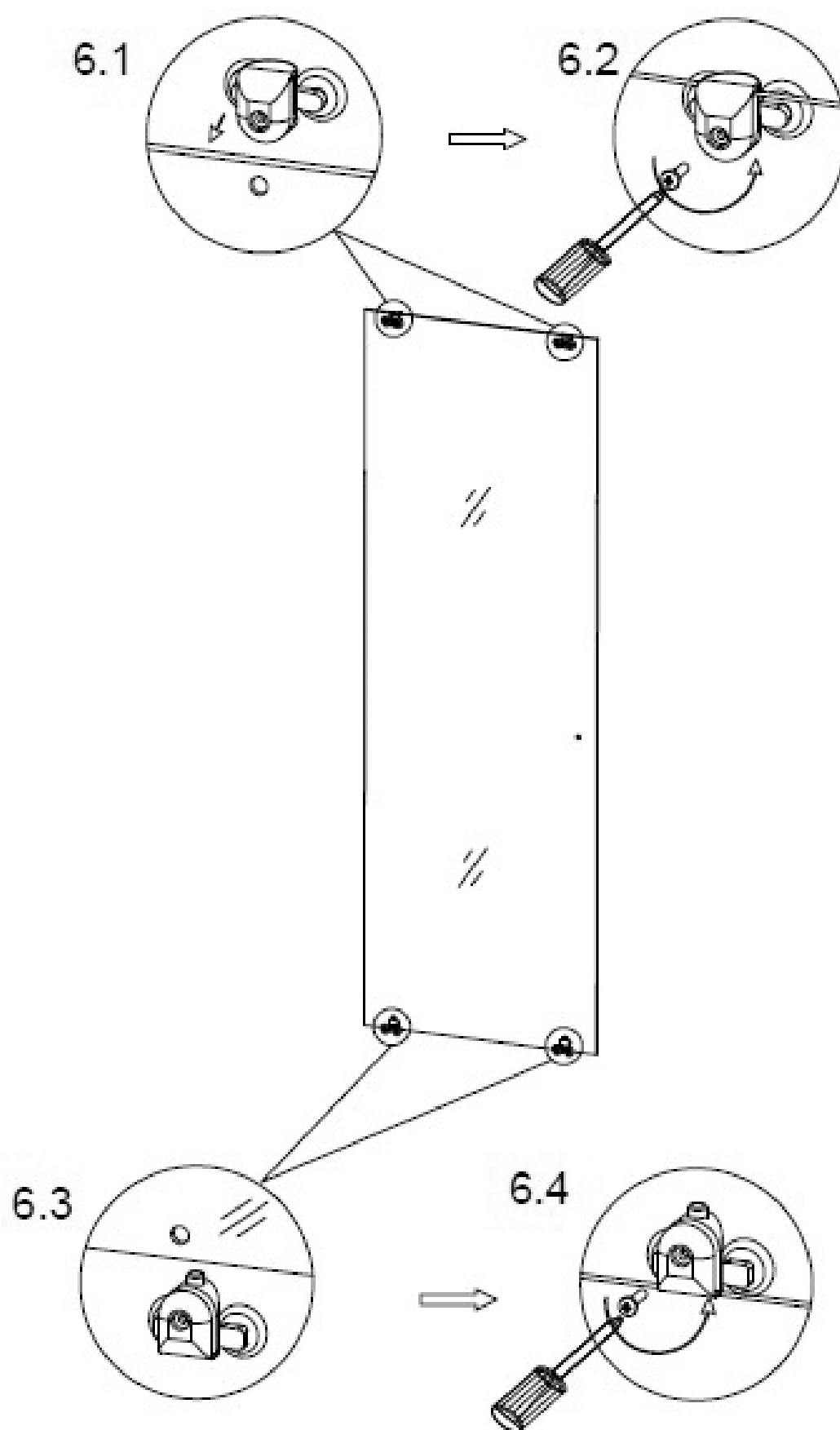


fig.7

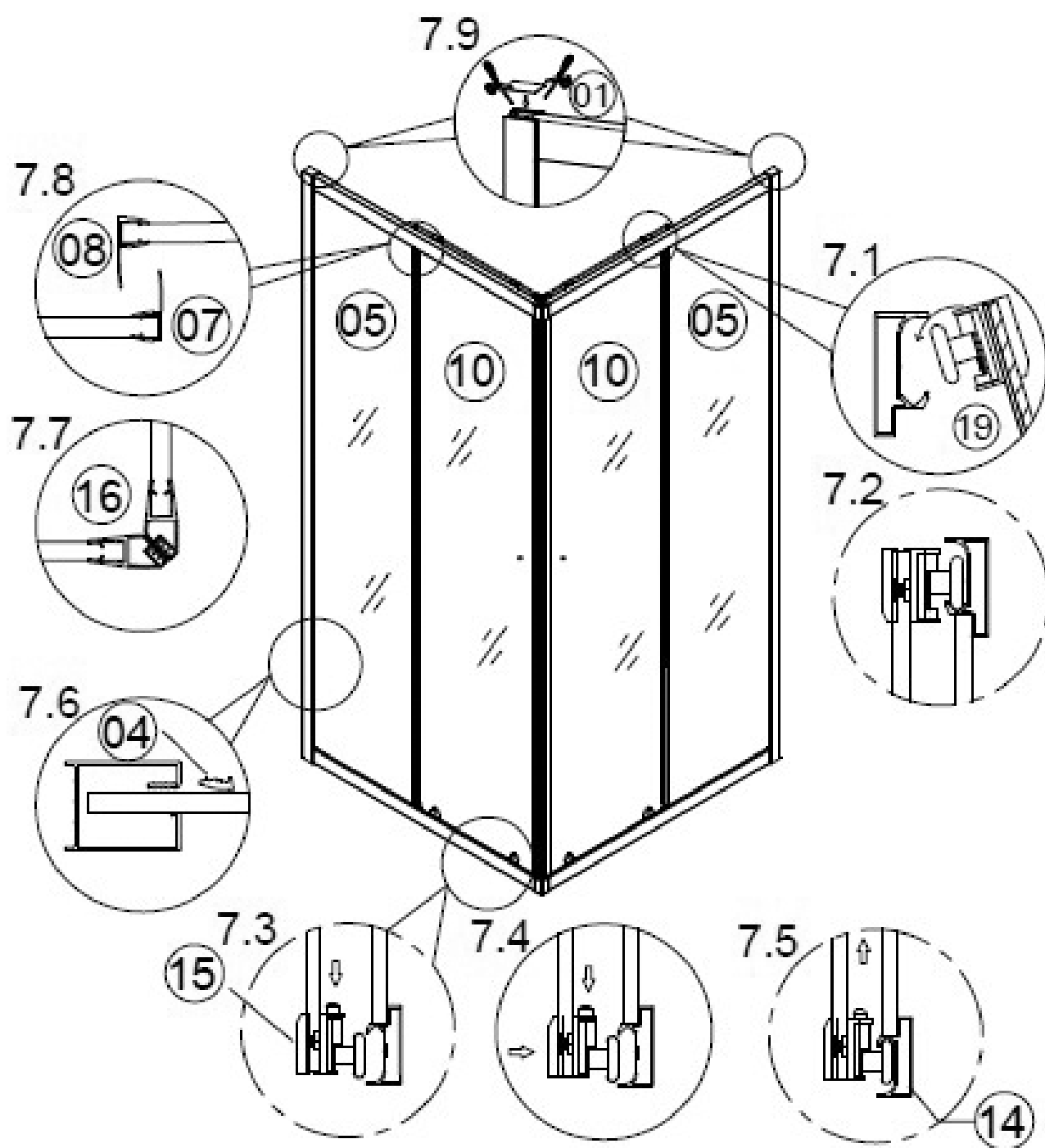
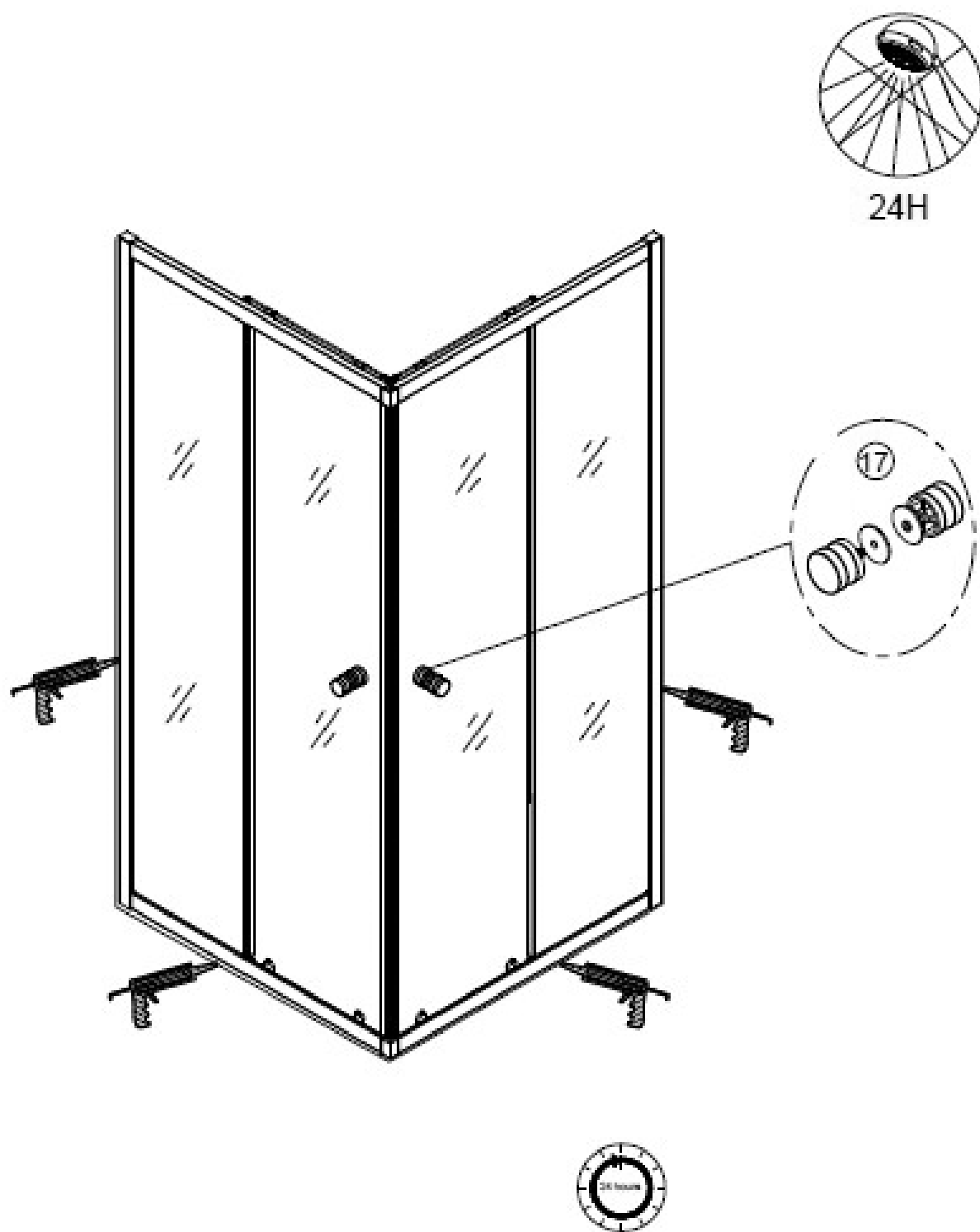


fig.8



Allow 24 hours for silicone to dry before use.
Silicone on the outside edge only.

AFTERCARE INSTRUCTIONS

After use, your shower should be cleaned with soap and water, especially in hard water areas where insoluble lime scale can build up; avoid gritty or abrasive cleaners, take care to prevent contact with strong chemicals such as organic solvents and strippers, and use glass cleaners cautiously, if in doubt, consult the cleaner's manufacturer; please keep these instructions for aftercare and customer service details.

Environment Protection and Waste Protection

Recycle unwanted packaging materials. When this product is no longer required, or has reached the end of its useful life, please dispose of it in an environmentally friendly way. Drain any fluids (if applicable) into approved containers, in accordance with local waste regulations. It is our policy to continually improve products and we reserve the right to alter data, specifications and parts without prior notice. No liability is accepted for incorrect use of this product. Guarantee is 12 months from purchase date, proof of which is required for any claim.

Jack Sealey Ltd t/a Baridi, Kempson Way, Suffolk Business Park, Bury St Edmunds, Suffolk, IP32 7AR UK
Jack Sealey (EU) Ltd t/a Baridi, Farney Street, Carrickmacross, Co. Monaghan, A81 PK68 Ireland
Tel: 01284 757575 • **Email:** support@baridi.co.uk • **Web:** www.baridi.co.uk